



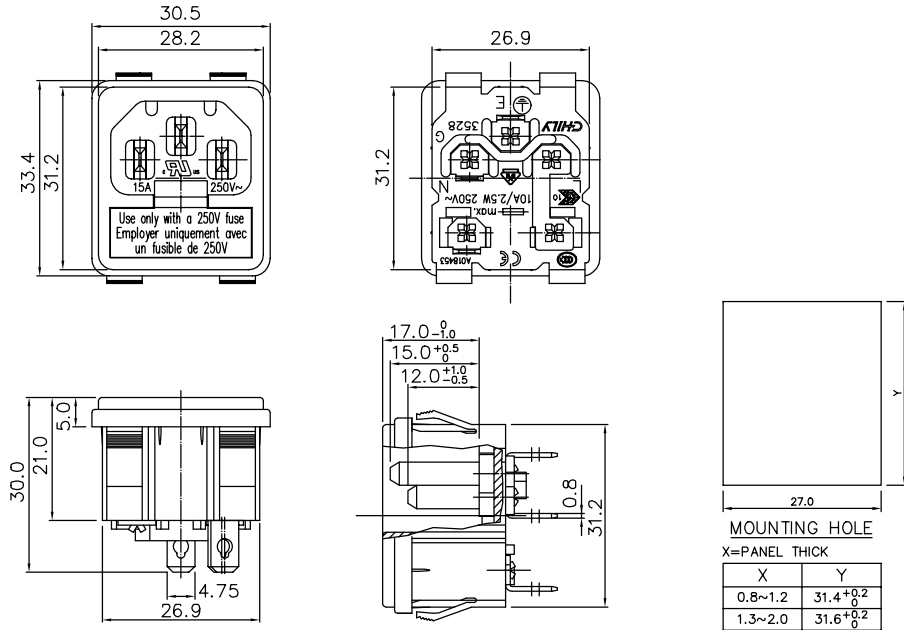
**3528
SERIES**

SPECIFICATION



RATING	: 15A 250VAC (UL,C-UL)
INLET	: 10A 250V~ (ENEC)
FUSE HOLDER	: MAX.10A/2.5W 250V~ (ENEC)
INSULATION RESISTANCE	: DC 500V 100MΩ OR MORE
WITHSTAND VOLTAGE	: AC 1500V FOR 1 Min

Standards: IEC320/C14/C18, IEC127



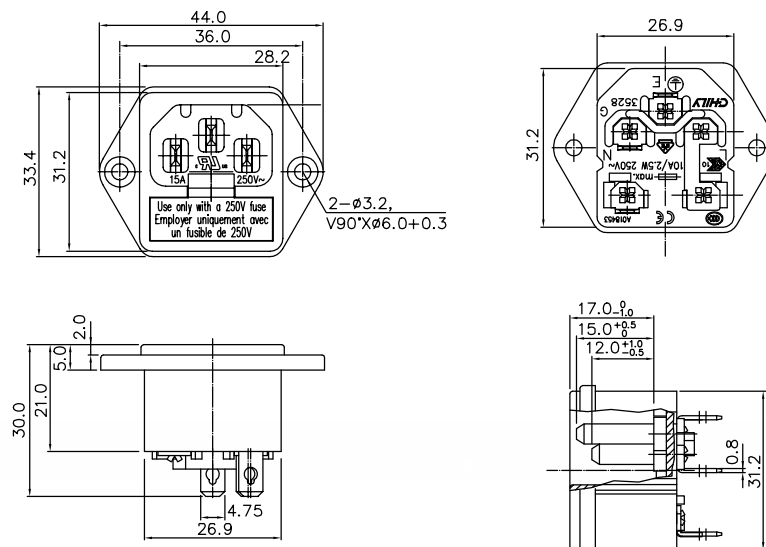
**3528
SERIES**

SPECIFICATION



RATING	: 15A 250VAC (UL,C-UL)
INLET	: 10A 250V~ (ENEC)
FUSE HOLDER	: MAX.10A/2.5W 250V~ (ENEC)
INSULATION RESISTANCE	: DC 500V 100MΩ OR MORE
WITHSTAND VOLTAGE	: AC 1500V FOR 1 Min

Standards: IEC320/C14/C18, IEC127





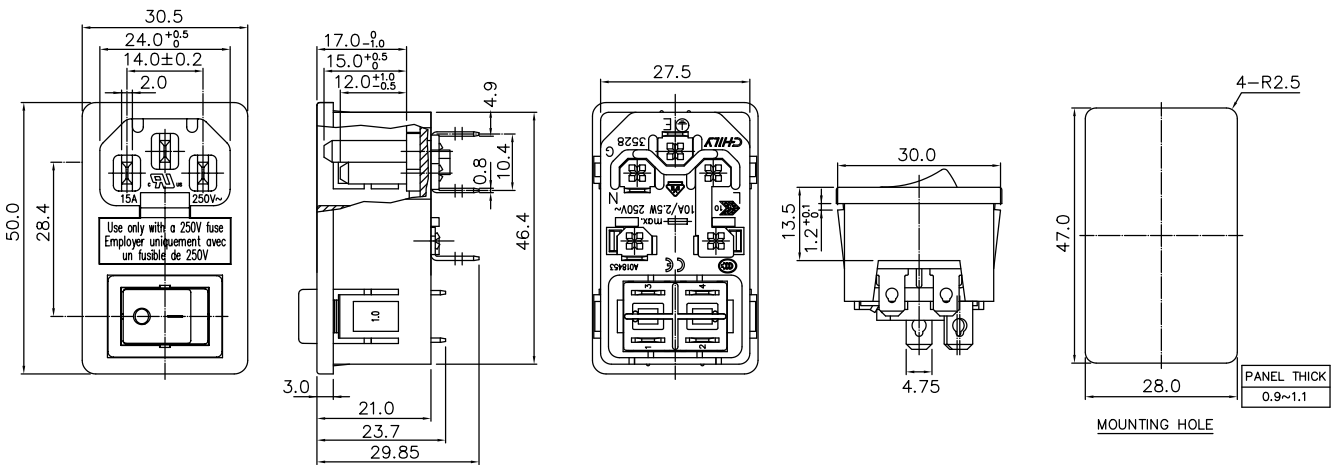
**3528
SERIES**

SPECIFICATION



RATING	: 15A 250VAC (UL,C-UL)
INLET	: 10A 250V~ (ENEC)
FUSE HOLDER	: MAX.10A/2.5W 250V~ (ENEC)
INSULATION RESISTANCE	: DC 500V 100MΩ OR MORE
WITHSTAND VOLTAGE	: AC 1500V FOR 1 Min

Standards: IEC320/C14/C18, IEC127



HOW TO ORDER

3528 -

FUSE HOLDER	TERMINAL	CIRCUIT	BODY		SWITCH
A0: NONE Use only with a 250V fuse Employer uniquement avec un fusible de 250V	T3: 4.75x0.8 T5: 6.35x0.8 	C01: 3 PIN 3T NONE C02: 2 PIN 2T C03: 3 PIN 5T C04: 2 PIN 4T	B03:SNAP IN B03A:SNAP IN PANEL THICK 2.0mm B03B:SNAP IN PANEL THICK 1.0mm 	B05:SNAP IN B05A:SNAP IN PANEL THICK 2.0mm B05B:SNAP IN PANEL THICK 1.0mm 	S: WITH SWITCH
A1: Use only with a 250V fuse Employer uniquement avec un fusible de 250V	T7: 2.58x0.8 T9: 4.75x0.8 T11: 		B04:SCREW 	B06:SCREW 	