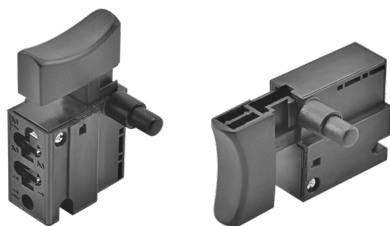
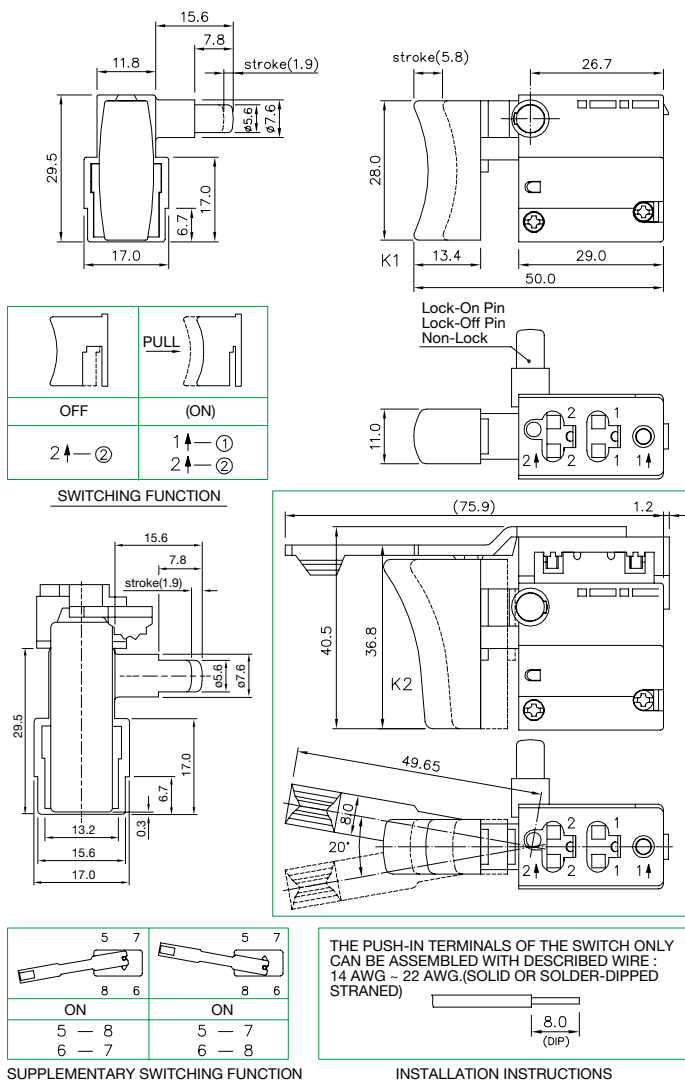


## SPECIFICATION



RATING:	13A 125VAC, 6A 250VAC (UL, CUL)
INSULATION RESISTANCE:	DC 500V 100MΩ OR MORE
CONTACT RESISTANCE:	DC 2-4V 1A 20mΩ OR LESS
WITHSTAND VOLTAGE:	AC 1500V FOR 1 Min
AMBIENT TEMPERATURE:	0~55°C
ELECTRICAL LIFE:	50,000 CYCLES

## SIZE



THE PUSH-IN TERMINALS OF THE SWITCH ONLY  
CAN BE ASSEMBLED WITH DESCRIBED WIRE :  
14 AWG ~ 22 AWG.(SOLID OR SOLDER-DIPPED  
STRANED)



### SUPPLEMENTARY SWITCHING FUNCTION

## INSTALLATION INSTRUCTIONS